

St Anne's Church Baslow

The Windows

By David Dalrymple-Smith



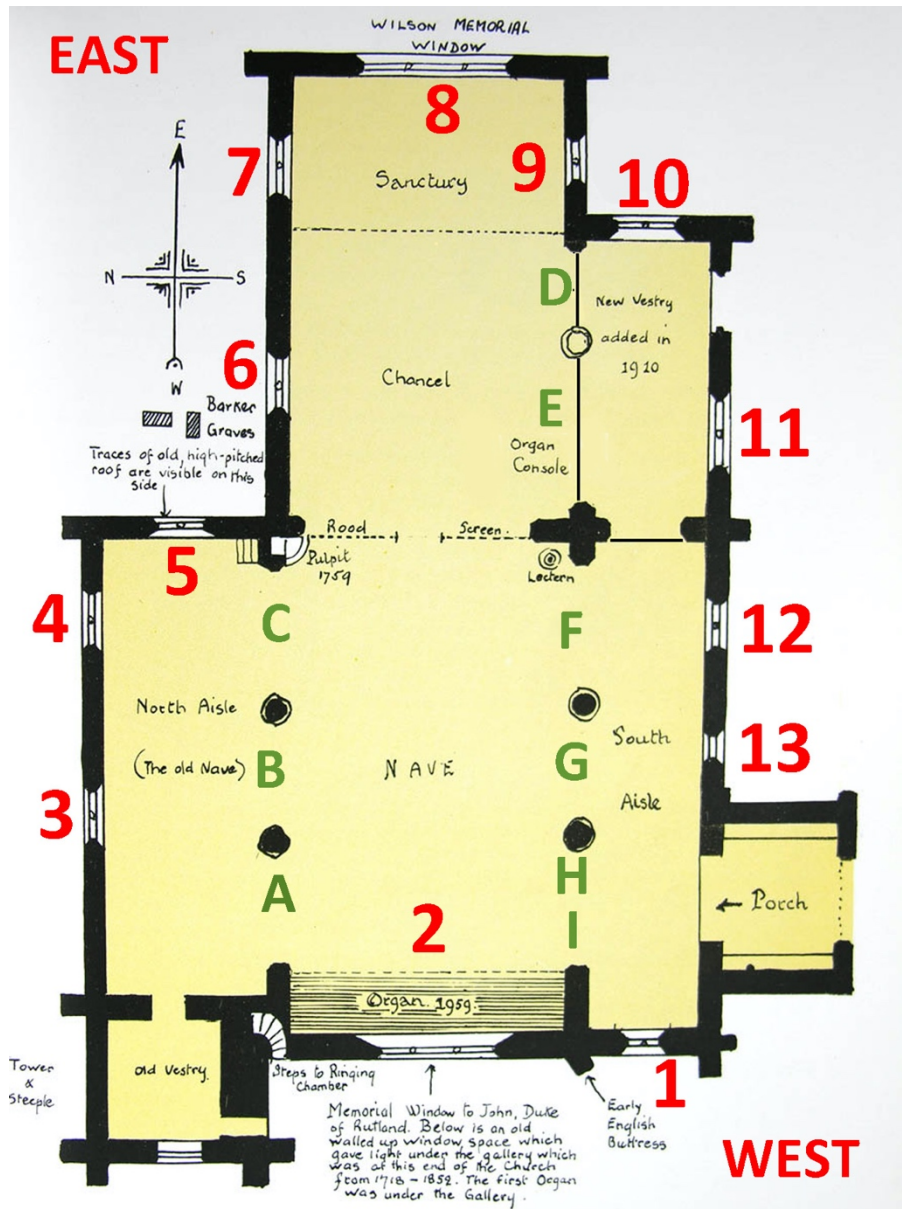
This pamphlet records the inscriptions in the windows in St Anne's Church Baslow, and makes comment on the people and places written in them. There is no description of the windows themselves, or of their artistic merit.

The photograph, taken from the south, shows the main windows of the south aisle and above the clerestory windows.

The Nave is at the back adjoining the spire. Continuing to the right is the Chancel and then the Sanctuary. In front is the porch leading into the South Aisle. The door on the right leads into the newest part of the building, the Vestry. The quality of the stonework gives some idea of the age.

PLAN OF THE CHURCH

This diagram was drawn in the 1930s by Mr C R Allsop, then headmaster of St Anne's School.



There are two sets of windows

Red. The main windows of the aisles, chancel and sanctuary are coloured red on the plan. Number 7 in the sanctuary, and numbers 10 and 11 in the vestry, are of plain glass with no inscriptions and receive no further attention in this pamphlet.

Green. The high clerestory windows are coloured green. D and E in the chancel contain plain glass only.

The windows are numbered clockwise, starting with the window to the left on entering the church

The Main Windows of the Aisle, Chancel and Sanctuary

There is no information available about the early history of the windows and the glass in them. It seems that all the windows were plain immediately after the 1854 restoration with the possible exception of the east window. The west window is firmly dated 1859 and most of the other windows suggest dates over the next 60 years or so.

Note Script in the upper half of the windows often ornate in character has been copied out in red. The rest of the text, at the bottom of the window and usually contained within a box, is green.

01 Window to left of porch entrance

Heaven and Earth shall pass away

S Luke

In memory of Isabel
the late Revd Joseph

But my word shall not pass away

S John

youngest daughter of
Wilson of Sheffield



Isabel Wilson was the youngest of the three unmarried daughters of Revd. Joseph Wilson, and the first to die in 1869

The window was originally in the sanctuary, but was moved to its present position when the new vestry was built in 1911

Joseph Wilson was Headmaster of Sheffield Grammar School from 1810 until 1818 when he took his own life. He was well known in town as he had a false leg (made of cork) and was the last person in Sheffield to use a sedan chair.

Three of his daughters, all spinsters, are buried in Baslow graveyard. Isabel is remembered in this window. Elizabeth the eldest is in the Clerestory window "H". The Lych gate was built to commemorate Mary who died in 1890. The main east window was known as the Wilson Window, and may refer to Joseph Wilson himself.

The daughters are buried in the churchyard

The connection of the Wilson family to Baslow church is obscure, but it must have been substantial because of their contribution to it.

02 The West window

Saint Mark chX

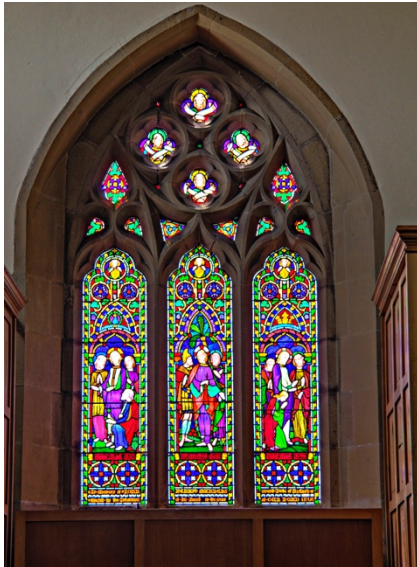
In Memory of LORD
Erected by the Inhabitants

St Matthew ch VII

HENRY MANNERS
of the Parish in the year

Saint Mark ch V

Seventh Duke of Rutland
of OUR LORD 1859



The Manners family, who later became the Dukes of Rutland, had been Lords of the Manor of Baslow and Bubnell for generations and maintained a close interest in the village. The inscription in the window is confusing. It refers to the 7th Duke, John Manners, who succeeded to the title in 1888. Sensibly it should have been the 5th Duke, Henry Manners, who died in 1857 and who contributed to the 1854 restoration.

03 Window north aisle

S Luke the beloved Physician

To the Glory of God and in
VO dP VD FRCS Born
for 50 years

S Martin of Tours

memory of Edward Mason Wrench
1 July 1833 Died 12 March 1912
doctor in Baslow



Dr Wrench was the physician to the Duke of Devonshire and general practitioner to the people of Baslow and nearby villages. By virtue of his Chatsworth appointment, he lived at Park Lodge in Nether End. He was a major presence in the village, and was actively involved, one suspects as chairman or organiser, in all village activities. His office of churchwarden is recorded elsewhere in the church.

His gravestone, in the form of a sundial, is in the churchyard alongside the Church Rooms. He kept meticulous diaries which are now in Nottingham University.

04 Window in north aisle

S Anne

B V Mary

Whitby

Durham

St Hilda Abbess

Saint Aiden Bishop

To the Glory of God and in memory of John Henry

Royle Tasker Born 2nd Oct 1848
Died 17th Jan 1914



John Tasker was one of the first commuters to live in Baslow, rebuilding Abney House in the late 1890s. He was a director of the family firm Tasker Engineering Co of Sheffield, which was a pioneer in electricity generation and telephones. He installed a telephone exchange in Windsor Castle for Queen Victoria.

In 1901 he used electricity to light the church and his own house from a generator installed in Calver Road flour mill.

The firm is still active in Sheffield today.

05 Window in north aisle

Be ye also ready for in such an hour

as ye think not the son of man cometh

S. Matthew

S. Mark

To the Glory of God and in loving memory of
This window is placed by his niece Anne Elliott .

Charles Elliott of Sheffield who died June 28th 1880.
Blessed are the dead which die in the Lord



Charles Elliott was born in Curbar in 1805, trained as a chemist and druggist, and lived in Sheffield. In his later years, his niece Anne lived with him as housekeeper.

The Elliotts were a prominent Curbar family occupying Grislow Fields farm for generations. Charles was probably uncle of both Thomas W Elliott the last farmer at Grislow and John Charles Elliott vicar of Curbar, who died in 1920 and is buried next to the path near the church porch.

Curbar was part of Baslow Parish until 1860.

08 East Window



Like the west window is has three panels. There is no inscription. It has been known as the Wilson Window. This may have been the same family as that described in Window 01

09 Window in sanctuary facing south

Thy salvation cometh

Isiah

Glory to God

In loving memory of Horatio Mason & Sarah
This window is placed by

Behold the Lamb of God

S John Bap

in the highest

his wife, whose bodies rest in this church.
their surviving children 1884



Horatio Mason was born in Birkenhead in 1772. He came to Calver in the late 1790s to be the manager of the new Calver Cotton Mill built by the Gardom family of Bubnell and John Pares of Leicester. By 1824 all the original shareholders had died and he inherited the Mill. He built Stocking Farm first as a Sunday School: later in 1833 it became a full school for the mill children. It did not prosper and he had to leave bankrupt in 1839. With new management and money the mill was restored to profit.

This window suggests he had recovered financially by the time he died in 1858. He is buried with his family in the churchyard near the church rooms.

12 Window south aisle

He is not here for he is risen

To the Glory of God
Maria Branson and
whose bodies rest near this

I go the my Father and your father

and in loving memory of
Emmeline Ward
Church waiting their resurrection



Ferguson Branson was a Sheffield doctor who retired to Baslow in the 1850s and lived in "The Cottage" (now Baslow House) in School Lane. There is no suggestion that he practiced here. Maria was his elder sister and Emmeline Ward his niece: both women have similar tombstones nearby in the churchyard.

13 Window south aisle

Find my sheep

Feed my Lambs

To the glory of God, and in loving memory
of the Rev J Stockdale M.A. Vicar of
this Parish for 48 years 1859-1907



Jeremiah Stockdale, Vicar and leader, served Baslow for many years over an exciting period in the life of the village. He deserved his window! See also the Tablet in the Sanctuary dedicated to Jeremiah Stockdale and his wife.

THE CLESTORY WINDOWS

The clerestory windows are high up on either side of the nave and chancel. Their positions are indicated by letters (green) on the plan on Page 2. The two windows in the chancel, D and E, are of plain glass and are not discussed further.

It is thought that the windows were made in the late 1300s, that is about the same time as the knave itself was built. A significant feature are the lintels, at least some of which are incised sepulchral stones or "Cross slabs", possibly dating from the 1100s. The inscriptions include shears, keys, staffs, circles etc.

When the church was restored in 1894, it would appear that all the clerestory windows were replaced. The new had the common design apparent today. Some may have had coloured glass at the start, others may have been upgraded later, perhaps paid for by persons portrayed in them.

Lintel- Clerestory Window C



Lintel- Clerestory Window H



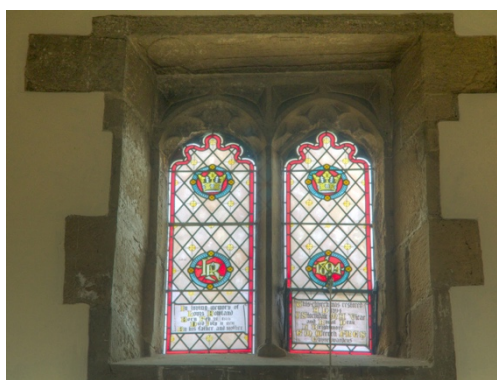
All these windows are similar in size shape and format. Each has two panels as shown in the photograph of Window A.

The top is semi-circular with a wavy edge: just beneath it is a crown. Lower down is an oval contained the initials of the person who is being commemorated (or in Window A the date).

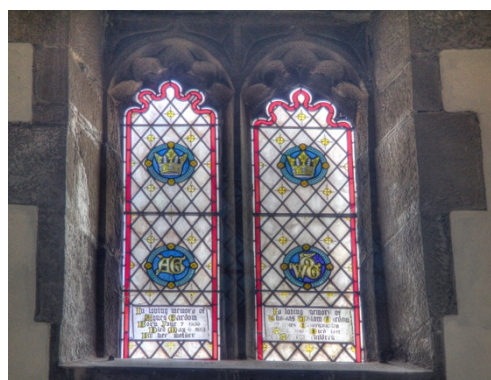
The memorial or message is in a text box at the bottom

In the descriptions below the large initials appear are in red. Green is used for the message or memorial in the text box.

Clerestory A



Clerestory B



A Rowland

LR

1894

In loving memory of
Louis Rowland
Born Feb 21 1888
Died July 11 1891
By his father and mother

This church was restored
AD 1894
J S Stockdale M A Vicar
and Rural Dean
H Brightmore
E M Wrench F R C S
Churchwardens

Panel 1

Louis was the son of Robert Rowland. Robert was born in Calver and trained as a baker and confectioner in Sheffield. He came to Baslow in the 1880s as publican at the Wheatsheaf. He used a small building across the brook as a bakery from which for many years he supplied the village with bread and cakes.

Panel 2

This second pane is self-explanatory. Dr Wrench was the doctor, and Henry Brightmore a businessman who lived Ladywell House at the top of Bar Road.

B Gardom

AG

TWG

In loving memory of
Agnes Gardom
Born June 7 1850
Died May 1883.
By her mother

In loving memory of
Thomas William Gardom
17 years Churchwarden
Born 1810 Died 1881
By his children

The Gardoms had lived at Yeld Farm since the early 1600s. The farmhouse was on the right at the bottom of the Sheffield road, and their land included the valley up to Gardoms Edge. An early Gardom John, who was born in 1664, was employed as a skilled blacksmith at Chatsworth when it was being rebuilt in the late 1600s.

Thomas William Gardom, commemorated here, lived and farmed at Yeld Farm, and also for many years was tenant of the farm attached to Bubnell Hall.

His daughter Agnes was unmarried, and described in the 1881 census as "Farmers Daughter". An essential member of the team!

Clerestory C



Clerestory F



C White & Woodruff

GW

In memory of
George White
Died March 8 1894
Aged 67 years

JW

In memory of
James Woodruff
Died March 7 1894
Aged 73 years

The Baslow Whites have been a leading family in the village for generations, probably living just north of the church, and latterly in Church Farm. George was a grocer and used part of his house as his shop. It is still a shop today though under separate ownership from the house. James Woodruff, his brother in law, was a hotelier who was living with him when he died.

F Wrench

WMW

In memory of a gifted son
By his father and mother
21 December 1863 May 1890

ELW

In memory of "a happy life"
By her Brothers and Sisters
27 February 1865 15 August 1890

The initials confirm that there were William Mervyn Wrench and Eliza Leticia Wrench, the children of Dr Edward & Anne Wrench. It was a sad time for the family, as the three eldest children died between 1890 and 1893, all in their 20s. (see Fieldsend, main Window I)

Clerestory G



Clerestory H



G White & Hinds

BW

In loving memory of
Betty White
By her grandchildren

CSH

In loving memory of
Charlotte S Hinds
By her children

John White was the owner and innkeeper of the Devonshire Arms, which he totally rebuilt in the 1850s. He was succeeded by his widow Betty, then by his widowed daughter Charlotte Hinds. The Inn remained with the family until she died in 1885.

H White & Wilson

EW

In loving memory of my Mother
Elizabeth White
Died 1891

EW

In memory of
Elizabeth Wilson
Full of good works

Panel 1. Elizabeth White cannot be identified with certainty. She may have been the wife of John White of Bubnell Cliff Farm.

Panel 2. Elizabeth Wilson died in April 1892. She was the last surviving daughter of Rev Joseph Wilson. See Window 01 above.

Clerestory I



I Fieldsend & Brightmore

ADMF

She rests from her labours
and her works follow her
A Diana M Fieldsend
Died Aug 14 1893 aged 30

SB

In loving memory of my Mother
Susanna Brightmore
Died 30 April 1890

Panel 1

Diana Fieldsend was the eldest daughter of Dr Wrench. She married Charles J Fieldsend, assistant land agent in Edensor in 1892 but died the following year.

Panel 2

Susanna was the widow Henry Brightmore the Churchwarden (see above). They had moved to Ladywell House in the 1870s with their daughter Annie L, who continued in the house eventually taking over the small farm attached to it. It is likely but not confirmed that they were related to the other Brightmores in the village at the time.

The Parochial Church Council has kindly given permission for me to use this information from the church

David Dalrymple-Smith dds@w3z.co.uk Dec 2013
see also www.baslowhistory.co.uk